



 4 bedrooms

 3 bathrooms

 Double Garage

 192.50 Sq M

## VISTA 2

The property features everything you need for comfortable living. Interior spaces have been carefully planned to maximize living space, Whilst connecting seamlessly to the outdoors.



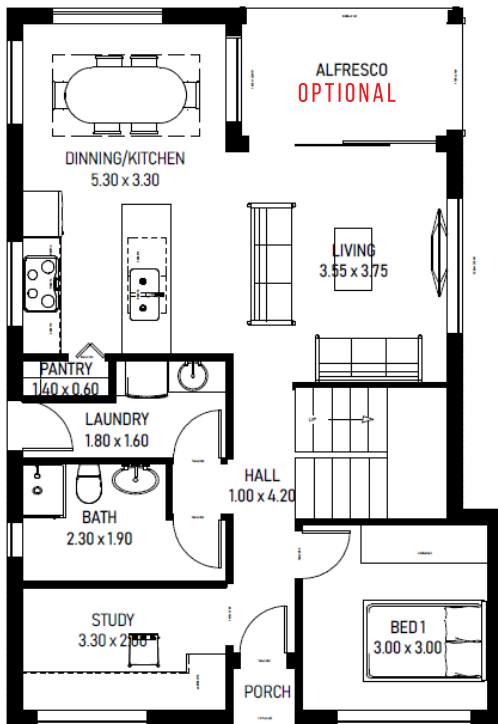
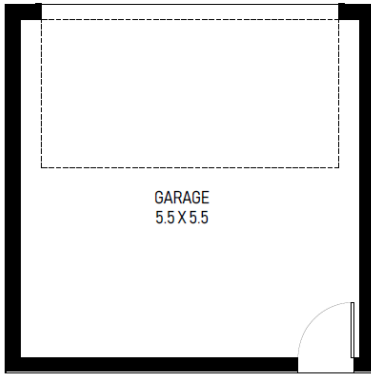
## KEY FACTS

- ✓ Double storey
- ✓ 4 bedrooms
- ✓ 3 bathrooms
- ✓ Double Garage
- ✓ 192.50 Sq M
- ✓ Exterior width 8.00m
- ✓ Exterior length 11.50m

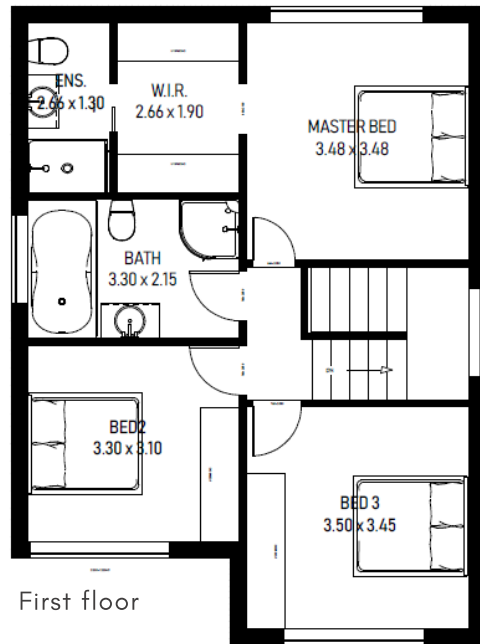
**FLOOR AREAS**

Ground Floor	83 sqm
First floor	71.75 sqm
Garage	30.25 sqm
Alfresco	7.5 sqm

Total Floor Area 192.50 sqm



Ground floor



First floor

